

## OUTDOOR FLAGPOLES



Our cone tapered ground set aluminum flagpoles are precision fabricated from new, 6063-T6 tubing utilizing the industry's most sophisticated manufacturing processes. The conical portion tapers approximately 1" in every 5-1/2 feet.

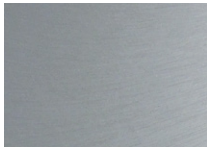
All anodized flagpole shafts are highly polished with fine grain aluminum oxide cloth resulting in a high quality, deep satin lustre finish. This finish represents the ultimate in architectural finishes for aluminum flagpoles. The elegant, soft sheen remains maintenance free. See below for anodized finishes available as standard.

### STANDARD & ANODIZED FINISHES

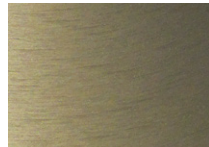
For bronze, dark bronze #313 is supplied as standard unless otherwise specified.



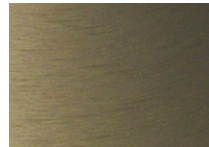
SATIN



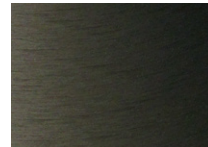
CLEAR ANODIZED



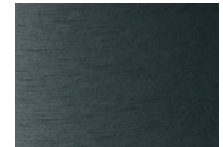
BRONZE #311 ANODIZED (LIGHT)



BRONZE #312 ANODIZED (MEDIUM)



BRONZE #313 ANODIZED (DARK)



BLACK ANODIZED (#335)

Custom color powder coating is also available upon request. Please contact us and provide specific RAL # for a prompt quotation.

